



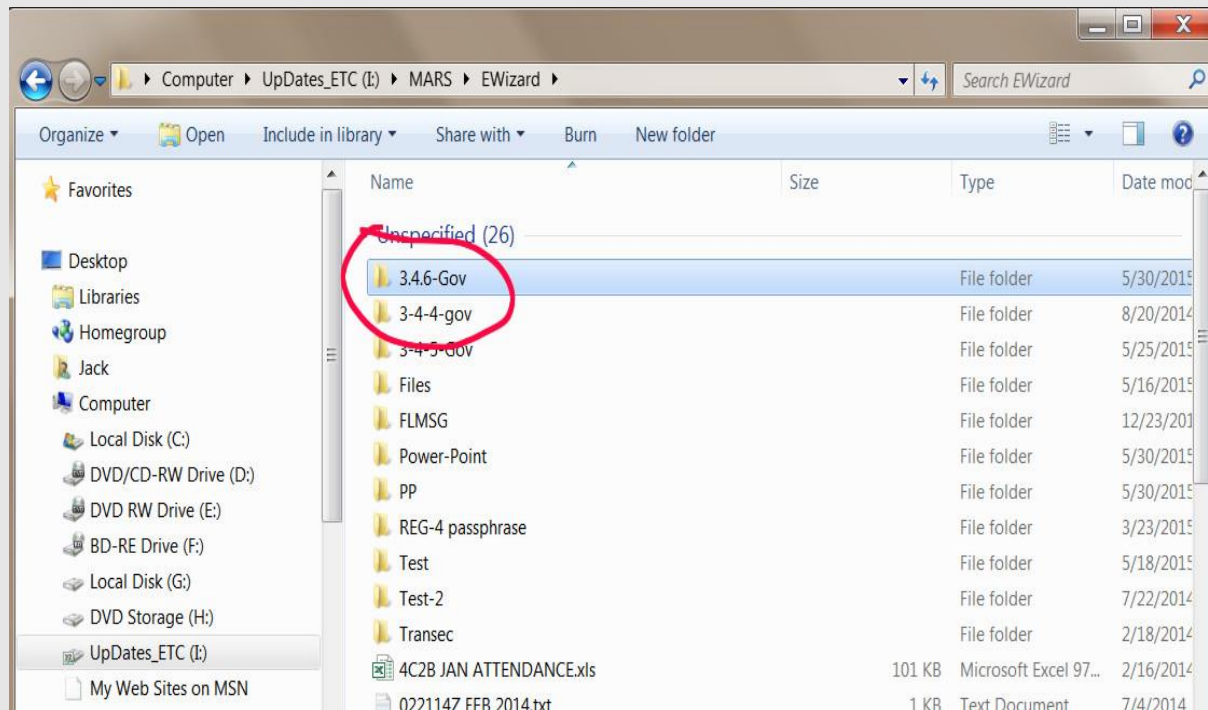


ENCRYPTION WIZARD

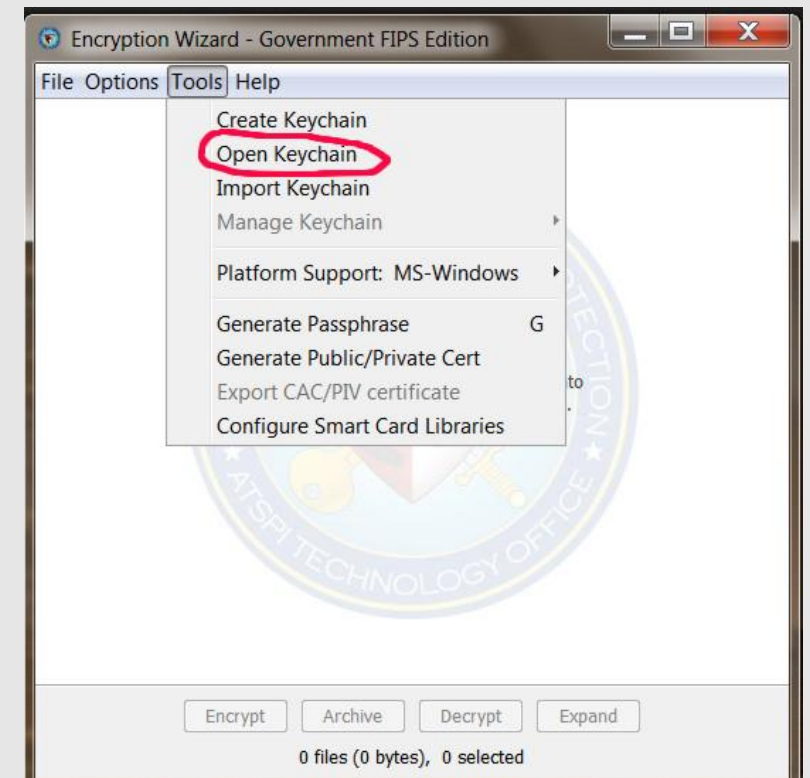


**I received a keychain by email
where do I put it?
HOW DO I....
OPEN IT, SAVE IT WITH MY OWN PASSPHRASE
& HOW DO I USE IT**

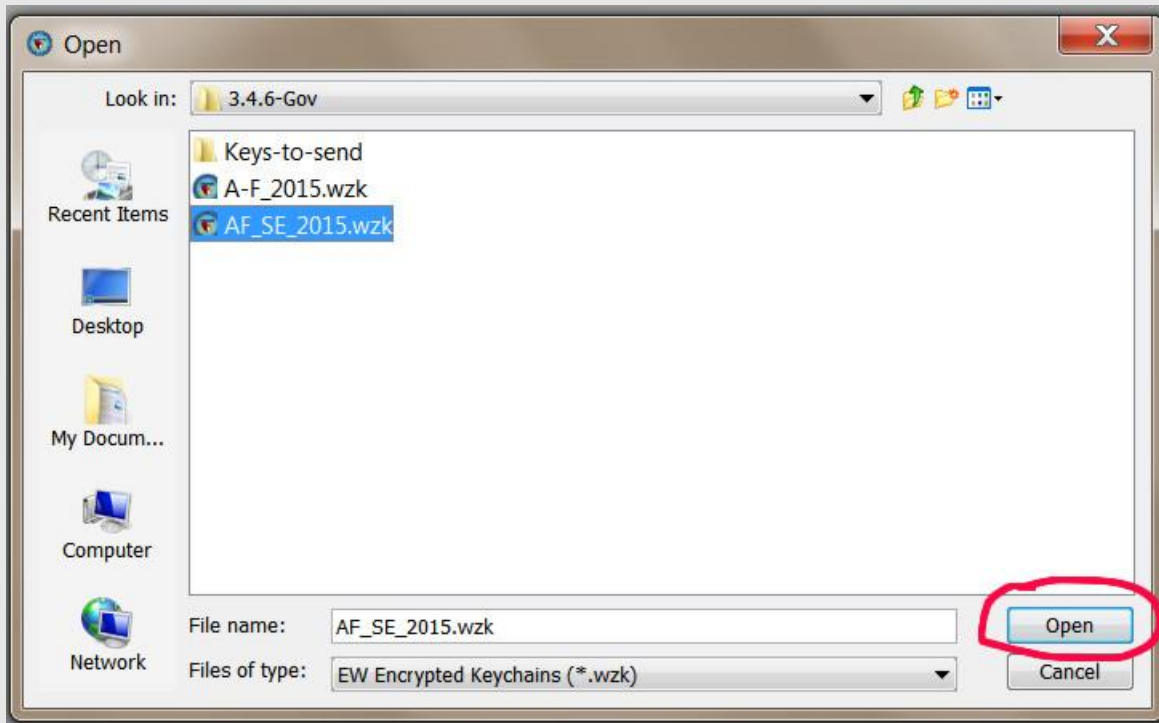
1. SAVE THE WZK FILE TO THE ROOT FOLDER OF ENCRYPTION WIZARD



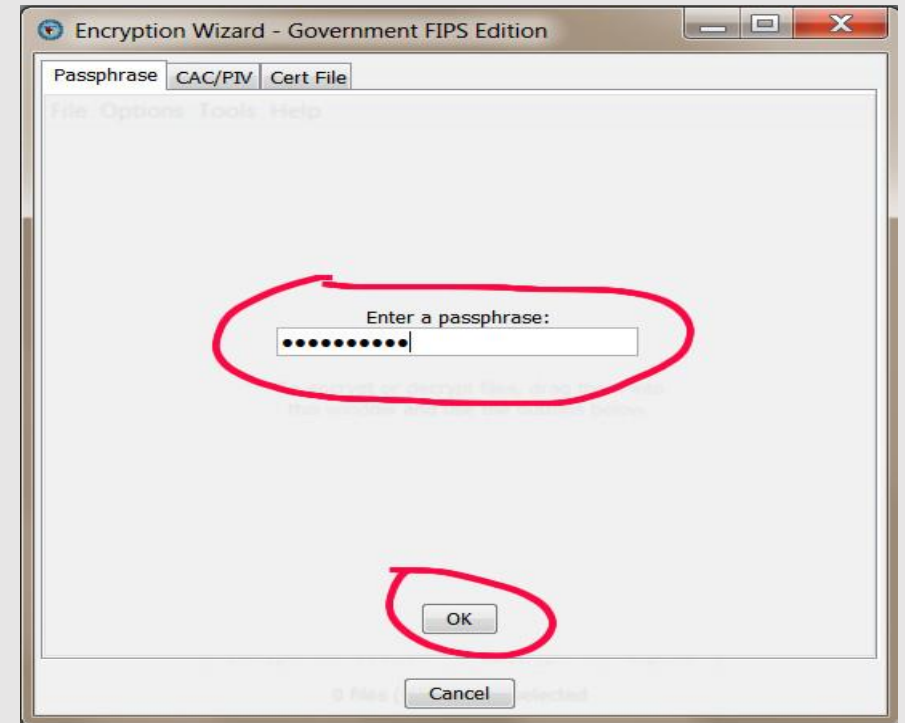
2. OPEN EW, SELECT TOOLS
OPEN KEYCHAIN



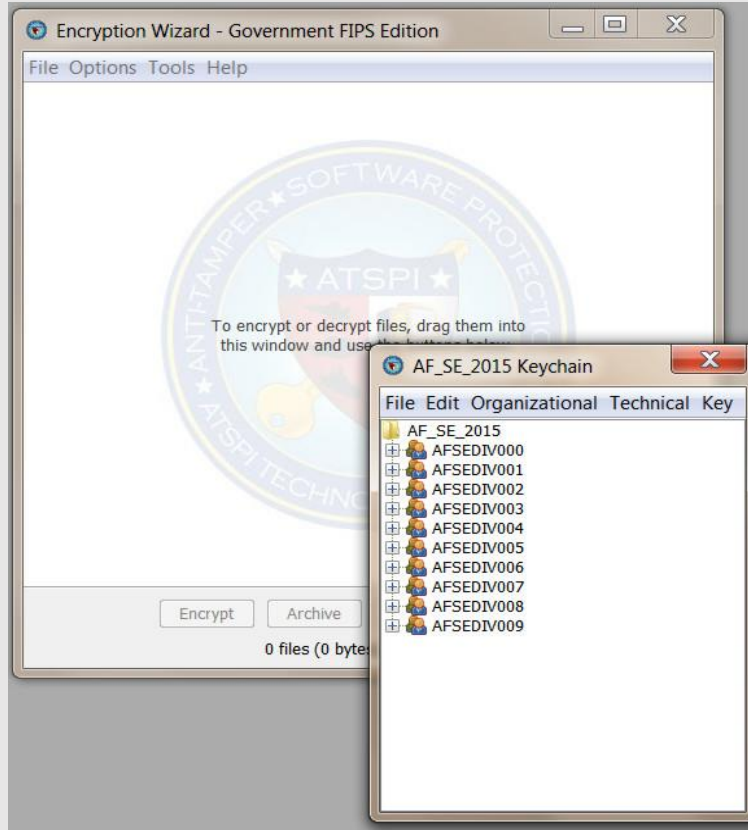
3. SELECT THE SAVED EMAILED WZK FILE



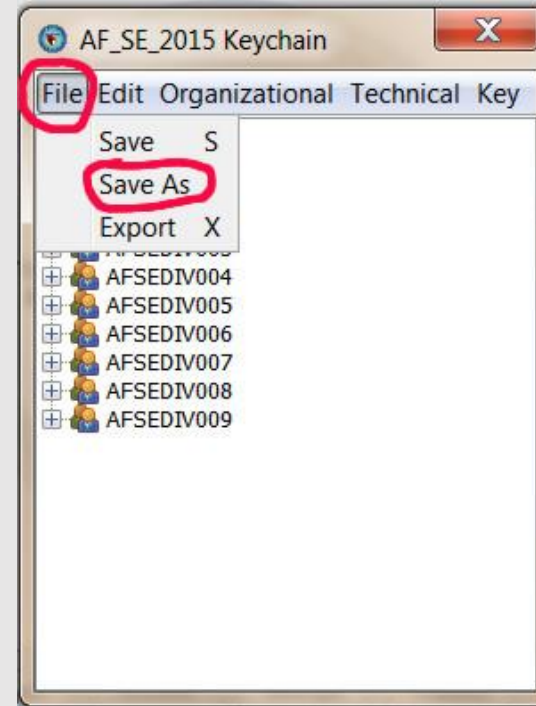
4. ENTER THE PASSPHRASE YOU WERE INSTRUCTED TO USE HERE



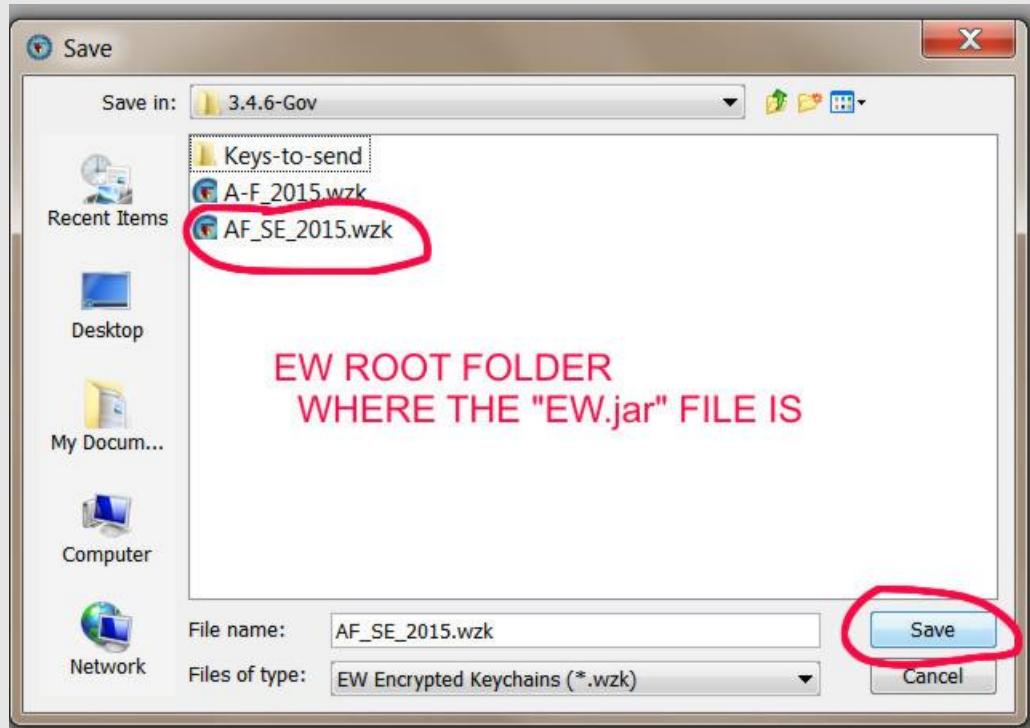
5. YOUR KEYCHAIN IS NOW OPEN
AND READY TO USE



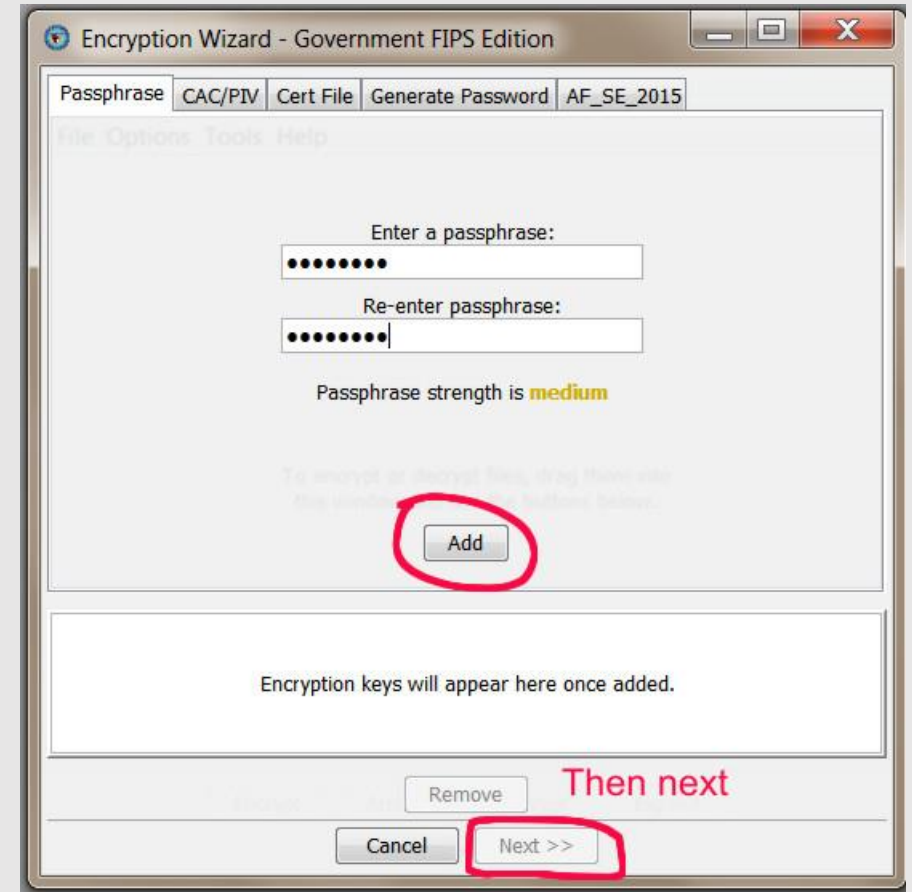
6. TO SAVE THE KEYCHAIN WITH
YOUR OWN PASSPHRASE, CLICK
FILE, SAVE AS



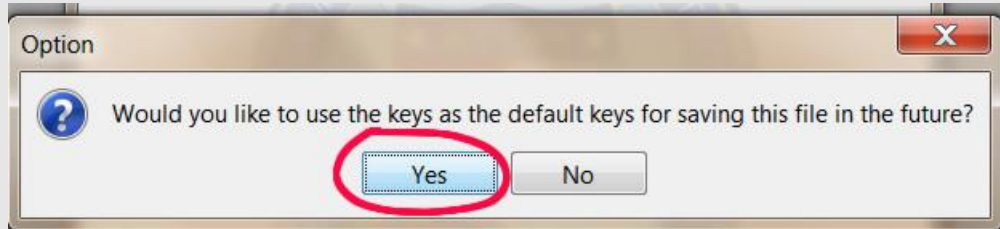
7. BROWSE TO THE EW ROOT FOLDER AND SELECT THE SAVED KEYCHAIN AND CLICK SAVE



8. ENTER THE PASSPHRASE OF YOUR CHOICE, CLICK ADD, THEN CLICK NEXT



9. SELECT YES



10. THE KEYCHAIN WILL NOW OPEN WITH YOUR P/W



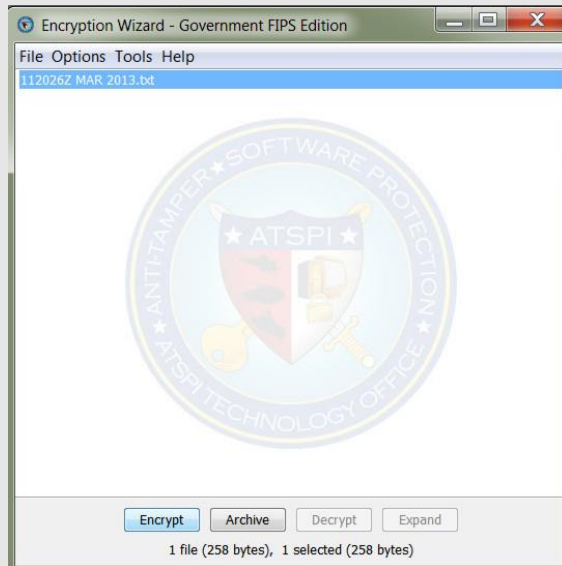
11. TO CHECK, SELECT TOOL, MANAGE KEYCHAINS



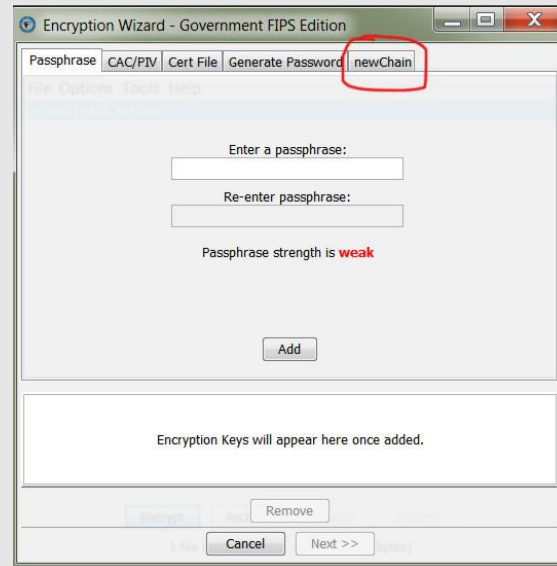
To encrypt with a passphrase

1. Drag & drop the file into EW
2. Click encrypt, then your keychain tab
3. Select the passphrase that you want to use, click ADD & then NEXT

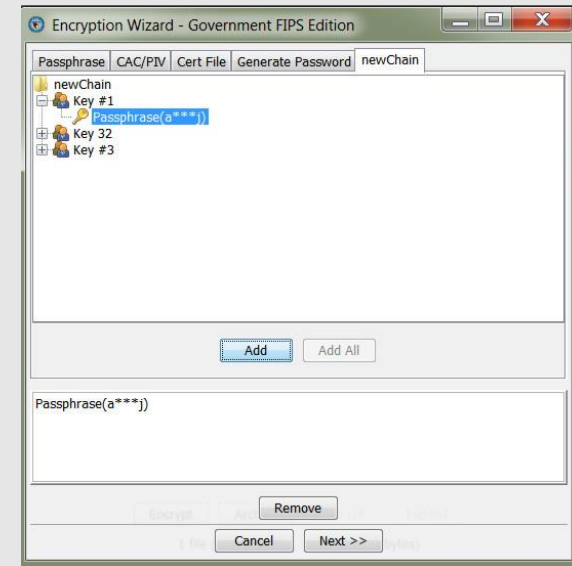
1



2

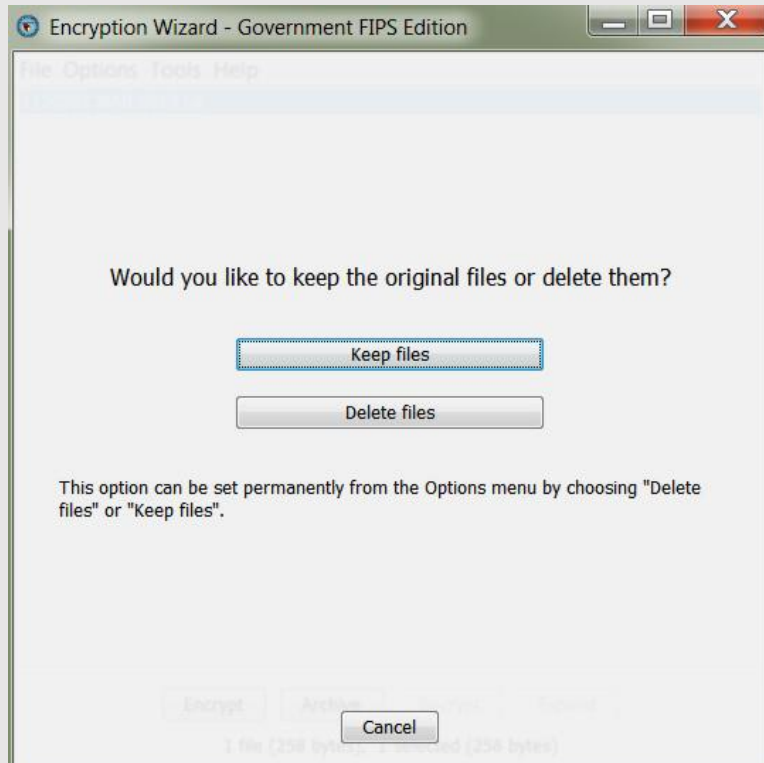


3



4. You can either keep or delete the original file, suggest keep
5. You now have an encrypted file
To Decrypt just reverse the order.
No more hand typing passphrases

4



5





IDEA
BOOK

